

HP ElitePad

Finally, a no-compromise business tablet

- Elegant, consumer-inspired design
- Built for Windows® 8^{1,7}
- Seamless integration into Windows IT environments
- Intel® x86 compatibility supports existing business applications
- Secure trust element & Encryption
- Premium touch & pen⁴ experience
- Thoughtfully designed accessories ecosystem⁴



Go Beyond Everyday Business



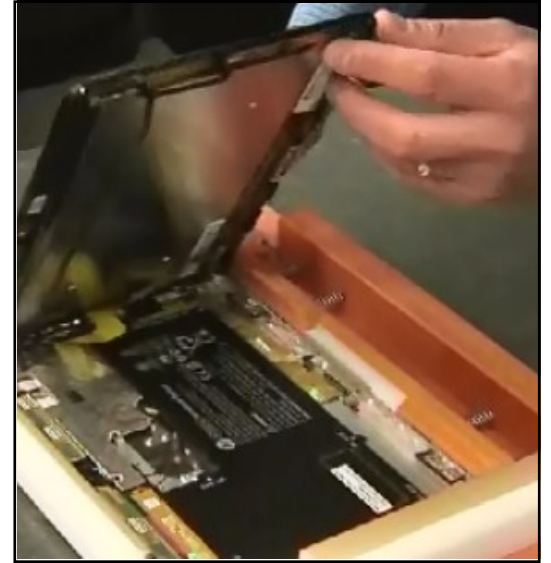
Premium Design



Built to Last



PC Productivity



IT Ready

Built to Last

Get tough. Rest Easy.

- Durable CNC machined aluminum back case, volume button and service door
- Corning® Gorilla® Glass 2
- Designed to withstand MIL-STD spec 810G testing
- HP Long Life battery for extended battery life span⁸
- 115,000 hours of reliability testing with HP's Total Test Process



PC Productivity

Keep up with the speed of bu

- Based on future Intel[®] Atom[™] x86 processor technology for existing bu application support
- 2 GB LPDDR2 memory^{3,6}
- 32 or 64 GB eMMC SSD³
- 802.11a/b/g/n + Bluetooth^{®5}
- WWAN via MicroSIM slot^{4,5}
- MicroSD slot for expanded storage



HP Mobile POS Solution

Create a personalized shopping experience

- Enable mobile point-of-sale functionality with HP Retail Smart Jacket
- 1D/2D barcode scanner
- Omni-directional, 3-track Magnetic Stripe Reader (MSR)
- Adjustable hand strap and/or shoulder strap use for associates
- Pass-through stereo sound, camera and USB out

Note: Concept may change without notice



Note: Concept may change without notice

Barcode Scanner



Magnetic Stripe Reader



HP Retail Jacket Design

Create a personalized shopping experience



Note: Concept may change without notice